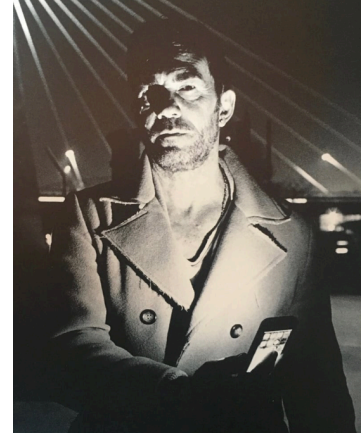




## MICHELE TOMBOLINI

Venice, 1963. Lives and works between Venice and Oslo.



Michele Tombolini's research ranges in different disciplines, from painting to sculpture, from installations to performances.

His initial pictorial style originates from an introspective research that has in instinct its most strong characteristic with a material style which is inspired by the great masters of the twentieth century, from Picasso to the great upheavals of the Transvanguard.

In occasion of his participation with a video to *Personal Structures* at the Venice Biennale in 2013, Michele Tombolini put the foundations for a change by turning his research towards an increasingly conceptual approach with a deeper focus on social matters.

In 2014 the artist moved to Berlin where he realized *Butterfly*, an interactive mural created on the facade of a building in the centre of East Berlin. The monumental artwork, h.20 m, fitted into the context of the international *Indelible Marks* project, aimed at raising public awareness of the great problem of child prostitution and child abuse in the world. *Butterfly* depicts a girl with a mouth closed by a plaster but with blue butterfly wings, and this artwork represents the beginning of a revolution in the artist's language where an element of positivity, represented by bright colours, is inserted in contrast to the greyness of the city and the degradation and social problems that characterize the great metropolises.

The artist's new artistic path is characterized by an approach to the image that can be defined as Pop, while maintaining a level of reading that carries a marked interest in social dynamics, the so-called Social Pop.



## **ARTIST'S BIOGRAPHY**

### **SELECTED SOLO EXHIBITIONS**

#### **2019**

Solo show curated by Elisabetta Scantamburlo at Hysteria Gallery, Milan

#### **2016**

Spazio Iqos forr Philippe Morris, Milan

#### **2015**

Indelible marks, Vecchiato New Art Gallery, Padua

Butterfly, installation at Krossenerstrasse 36, Friedrichein, Berlin

#### **2014**

Beauty and The Beast, Green Art Asia, Hong Kong

#### **2012**

Vain Art Gallery, Mestre, Venice

E luce fu', Palazzo delle Prigioni, Venezia

#### **2010**

Painting performance, Galleria Berga, Vicenza

#### **2009**

Luce in Bioritmo Cromatico, Palazzo Michiel, Venice

Viola Gallery, Novara

#### **2008**

Parentesi Studia Gallery, Vittorio Veneto, Treviso

### **SELECTED GROUP EXHIBITIONS**

#### **2018**

Al di là dei limiti curated by Aurora Bolandrin e Flaminia Valentini, Villa Burba Rho, Milan  
Noi no. Noi no, noi! La violenza no, group exhibition at Palazzo della Regione Lombardia, Milan

Cool-Air, Histerya Gallery, Milan

#### **2016**

Serie Butterfly, Spazio TID, Milan

Contini Art Factory, Venice

#### **2014**



Spazio Tadini, Milan

Intermezzo 21, Emerson Art Gallery, Berlin

**2013**

Personal Structures, Venice Biennial, Palazzo Bembo

**2010**

Santo Stefano Gallery, Venice

Viola Gallery, Novara

**2009**

Barbara Paci Gallery, Pietrasanta Lucca

**2008**

Artvienfalt, Monaco

Missart, Limone del Garda

**2004**

Sette + uno, i sette peccati mortali +uno, Extendo Artis, Bassano del Grappa

**ART FAIRS**

**2016**

Precious7 Art Basel, Miami

**2015**

Art Fair Bergamo

**2006**

Miart

**2002**

ART Innsbruck

**2003**

ARTMUC

**2005**

ART GENT

**2004**

Shanghai Art Fair

**2004 – 2008**

Padova Arte

Artverona

**CRIS CONTINI CONTEMPORARY**

15-16 Brook's Mews, W1K 4DS London

w. [www.criscontinicontemporary.com](http://www.criscontinicontemporary.com) e. [info@criscontinicontemporary.com](mailto:info@criscontinicontemporary.com)



CONTINI CONTEMPORARY  
15-16 Brook's Mews, W1K 4DS London  
email: [info@continicontemporary.com](mailto:info@continicontemporary.com)